

MO 2000QVP

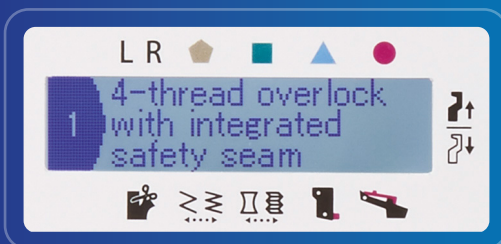
JUKI®

QVP  
*Quilt Virtuoso Pro*

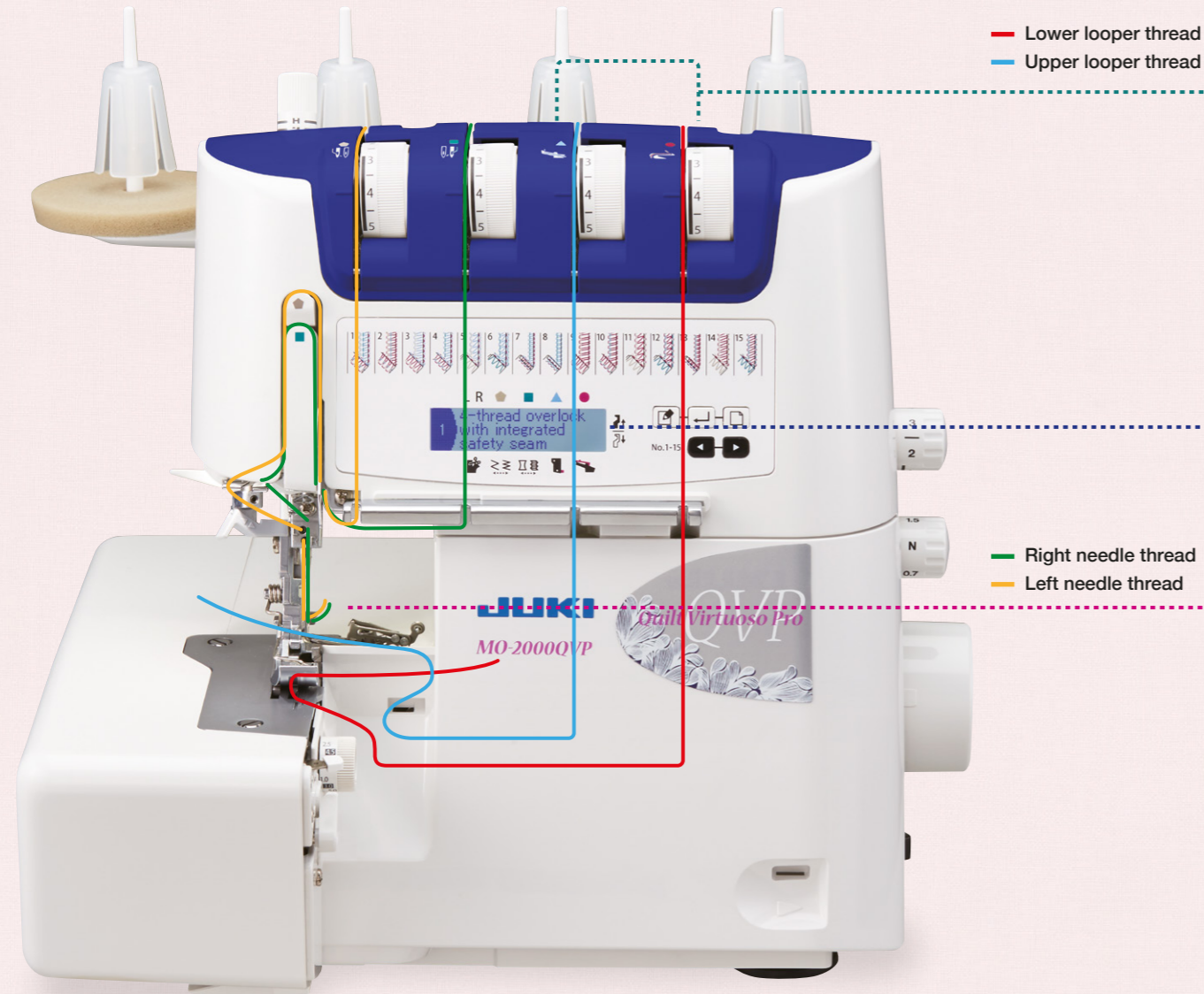


Effortless Threading with  
the Power of Air Simplified  
Serging with Informational  
LCD Screen

MO-2000QVP



# Air-Supported Threading! Create the Look of a **Professional Finish!**

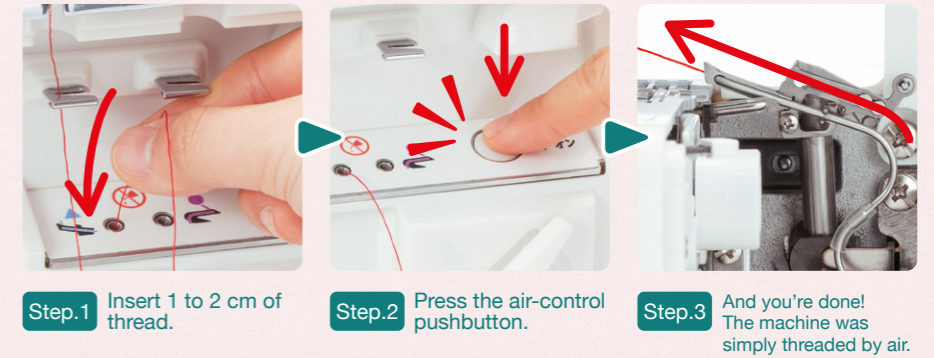


## MO-2000QVP

JAN:4946973008253

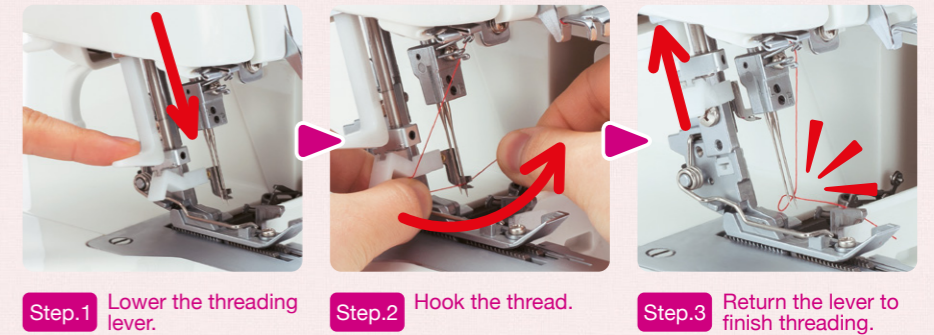
### Convenient Threading with the Easy Threader

Using the new easy threader feature, easily thread the machine from the threading hole to the looper with the power of a strong whoosh of air sent from the electric motor. This amazing function dramatically alters upper and lower looper threading.



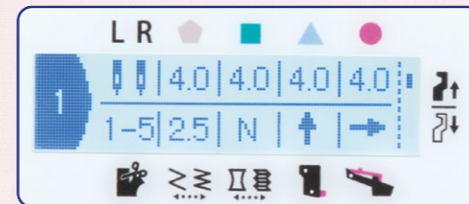
### Automatic Needle Threader

Quickly thread the needle! With the automatic needle threader, the needle is threaded in 3 easy steps.

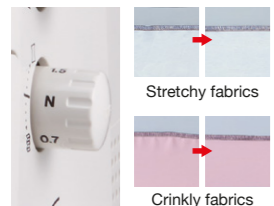


**NEW!**

### Informational LCD Screen

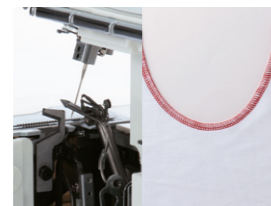


Easy set-up instructions including tension settings for 15 different stitches at a glance on the LCD Screen. No more searching through pages of your manual, serging is simplified with the informational LCD screen.



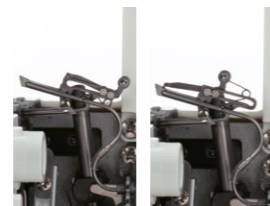
#### Adjustable Differential Feed

Even with easily stretched fabrics such as knits and georgette, create beautifully sewn finishes by adjusting the differential feed. Adjustments can even be made while sewing.



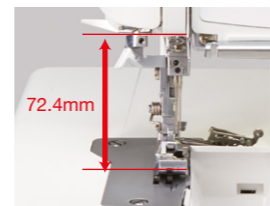
#### Beautiful Sharp Curve

The distance between the needle and knife is 9.95mm (conventional model: 15.5mm), allowing you to sew beautiful inside curves.



#### Upper Looper Converter 2-/3-Thread Conversion

Switch to 2-thread sewing simply by pushing the 2-/3-thread changeover attachment to the left, making this operation even easier.



#### Wide Throat Area

The height of the throat is 72.4mm. Due to this height, the usability of the work space improved infinitely.



#### Quiet Operation

The sound reducing design minimizes the operating noise and the unit sews with less vibration.



#### LED Sewing Light

The needle area is brightly illuminated. The long-life, energy-efficient and eco-friendly light will not heat up, even after a long period of use.



#### Waste Collector

Provided as a standard accessory, the waste collector catches cut-off fabric and is useful for keeping the area tidy.

#### Other Useful Features

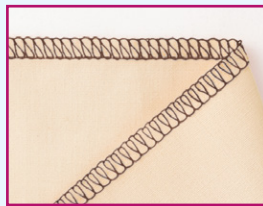
- Automatic rolled hemming
- Adjustable presser foot pressure
- Option to deactivate upper knife
- Cutting width adjusting dial
- Safety feature preventing operation when the presser foot is upper position or the cover is open.
- Thread trimming blade for easy thread cutting.

# Various Stitch Patterns To Unleash **Your Creativity!**



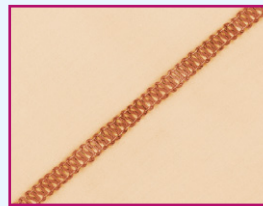
## 4-Thread Overlock

Uses 2 needles and 4 threads to securely sew together knitted fabrics.



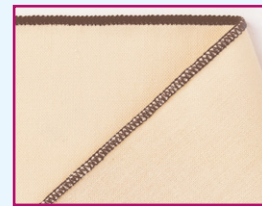
## 3-Thread Overlock

This basic stitch of overlock machines prevents fabric from fraying.



## 3-Thread Flatlock

Use this stitch as an accent on clothes, interior items and accessories.



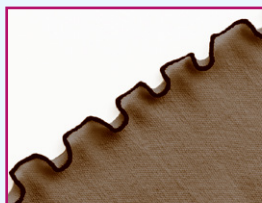
## 3-Thread Narrow Overlock

The fabric edge is rolled, then sewn with very narrow overlocking.



## 3-Thread Rolled Hem

The Fabric edge is rolled, then covered with thread.



## Frill 3-Thread Rolled Hem With Diff. Feed







Uses 3-thread rolled hemming and the differential feed on stretch fabrics to create richly designed articles.



## 2-Thread Overlock

Simply sew fabric edges with 2 threads to prevent fraying.

## Optional attachments

	<b>Blind Stitch Presser Foot</b> Part No. 40138091		<b>Beading Presser Foot</b> Part No. 40138106
	<b>Universal Blind Stitch Presser Foot</b> Part No. 40149058		<b>Curved Beading Presser Foot</b> Part No. 40149059
	<b>Elasticator Presser Foot</b> Part No. 40138095		<b>Piping Presser Foot</b> Part No. 40138103
	<b>Cording Presser Foot</b> Part No. 40138099		<b>Gathering Presser Foot</b> Part No. 40138121

## MO-2000QVP Standard Specifications

Number of Needles	1/2 Needles	
Needle	SCHMETZ 130/705 H or JLx2	
Number of Threads	2/3/4 Threads	
Differential Feed	0.7-2.0 Ratio	
Sewing Speed	Maximum 1,500 spm	
Easy Threader	X	
Light	LED	
Presser Foot Lift	5mm (Max: 8mm)	
Stitch Length	1-4mm	
Overlocking Width	Left Needle	5-9mm
	Right Needle	3-7mm
	Rolled Hem	2mm
Accessories	Needle set 130/705H(SCHMETZ)/ Screwdriver / Tweezers / Brush/needle inserter / Electronic foot control / Nets / Spool caps / Looper threader / Accessory bag / Dust cover / Waste collector / Oiler / Instruction manual / Operation support DVD	
Dimensions	330 (W) x 280 (D) x 310 (H) mm	
Weight	9.0 kg	



*Enjoy Exceptional Sewing and Quilting Performance  
Feel at Home with Traditional Juki Quality!*



# JUKI®

JUKI CENTRAL EUROPE Sp. z o.o. ul. Poleczki 21, 02-822 Warsaw, Poland

Tel.: +48 22 545 04 00 / Fax: +48 22 545 04 11

www.jukieurope.com / www.facebook.com/JukiSewlt / e-mail: juki@juki.pl